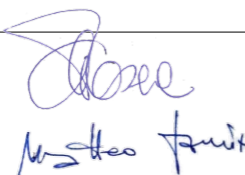
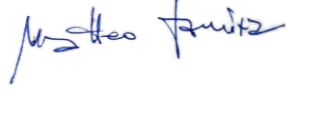
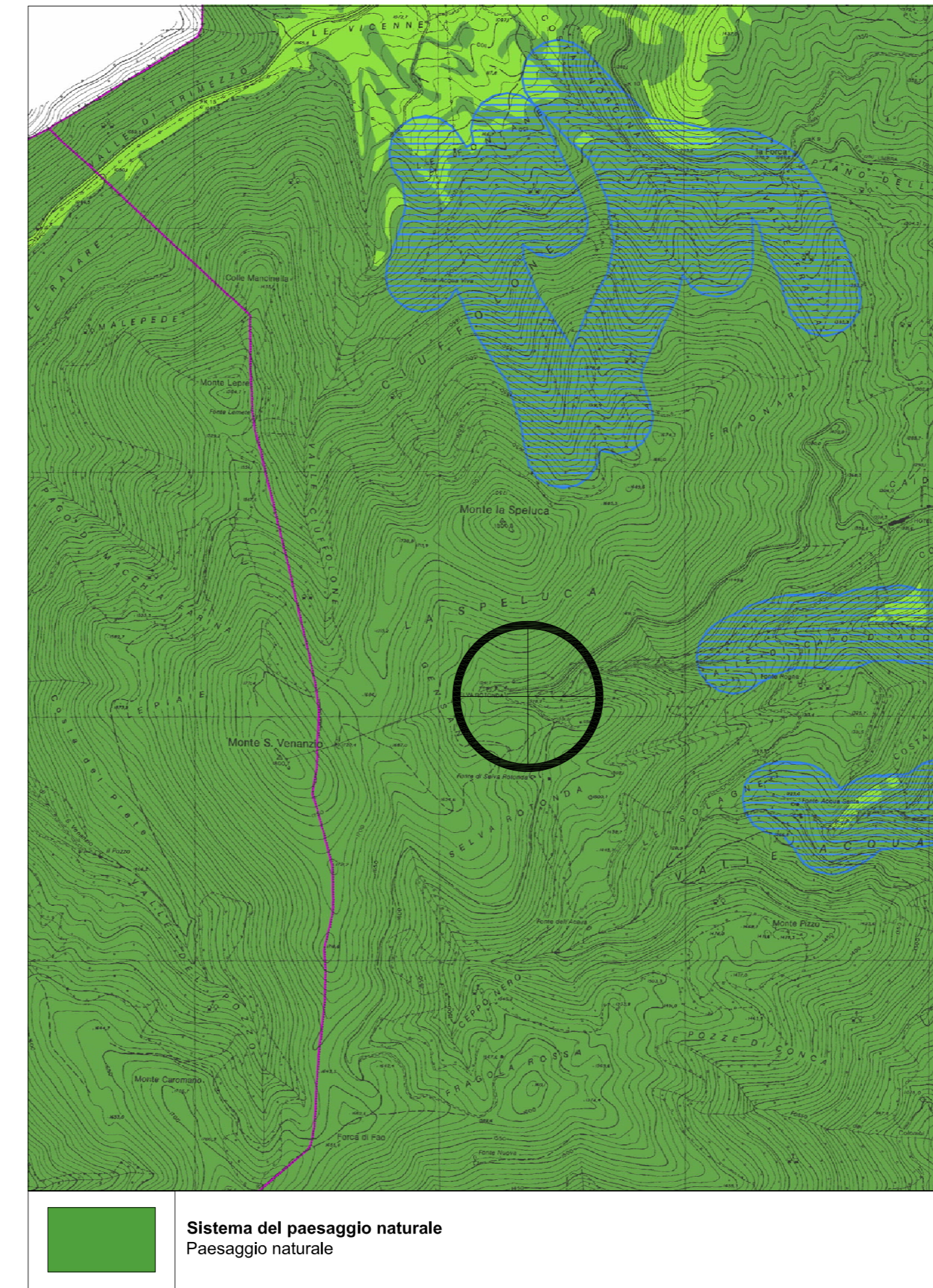


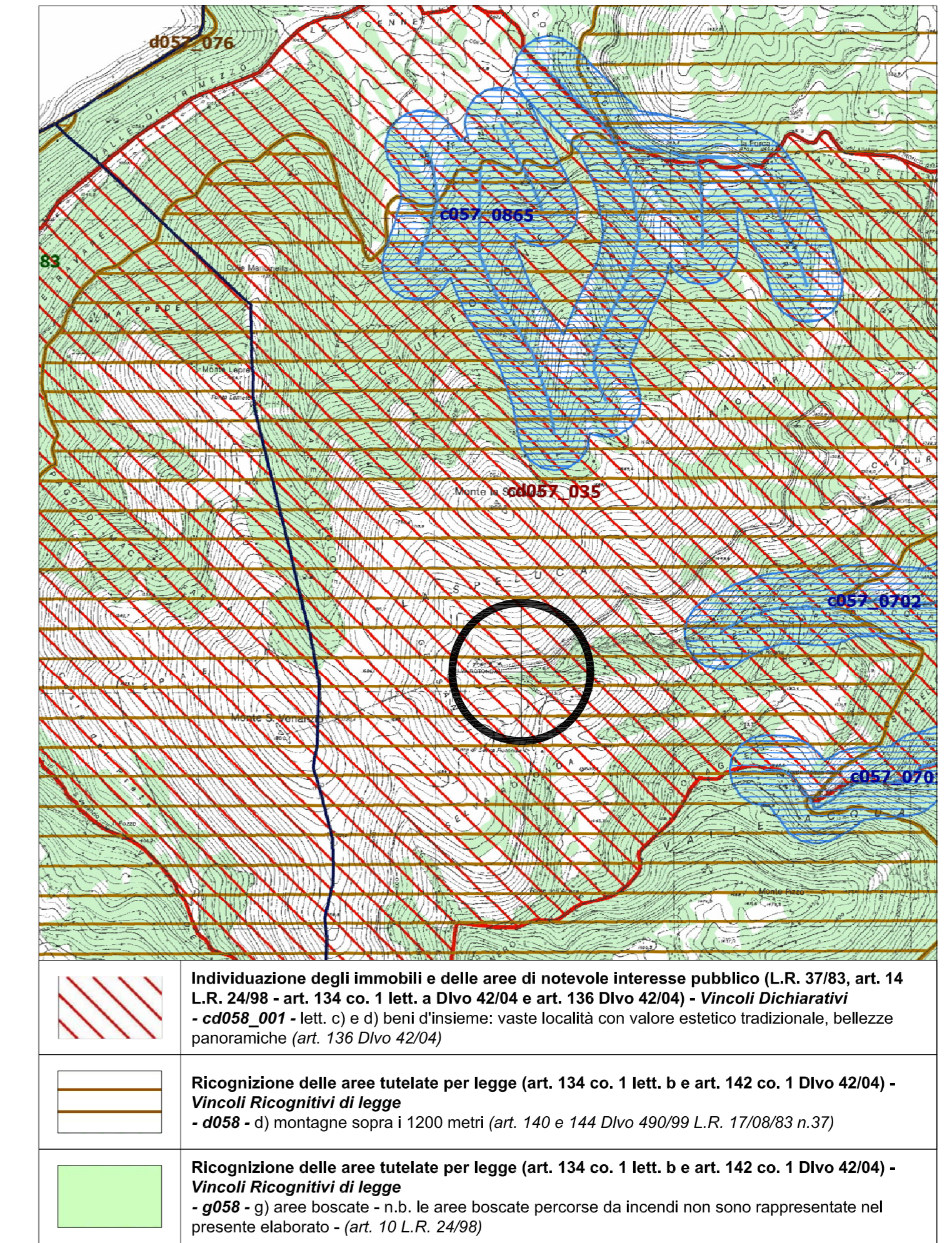
 UFFICIO SPECIALE RICOSTRUZIONE LAZIO		
UFFICIO SPECIALE RICOSTRUZIONE LAZIO		
COMUNE	COMUNE DI CITTAREALE	
OGGETTO:	RAFFORZAMENTO LOCALE DELL'INTERVENTO DENOMINATO "TERMINAL TURISTICO DELLA STAZIONE SCIISTICA DI SELVAROTONDA".	
PROGETTO DEFINITIVO-ESECUTIVO		
ELABORATO:	ELABORATI GRAFICI INQUADRAMENTO TERRITORIALE	
PROGETTISTA:	Ing. Pasquale De Pasca  Geom. Matteo Damizia 	
C.S.P.:	Geom. Dino Primieri	
DATA: Ottobre 2018	RUP: Geom. Dino Primieri	TAVOLA: 02a



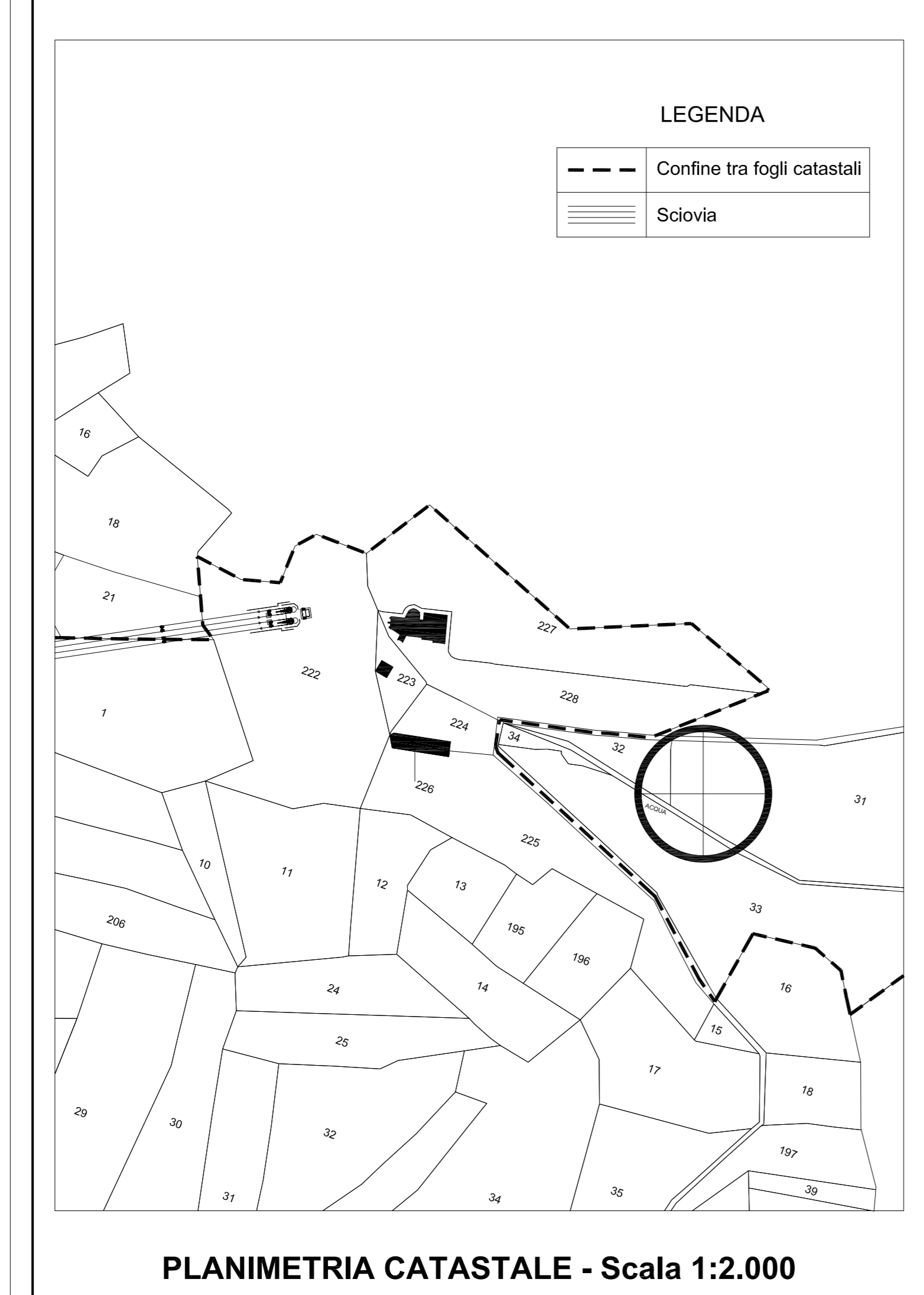
ORTOFOTO - Scala 1:10.000



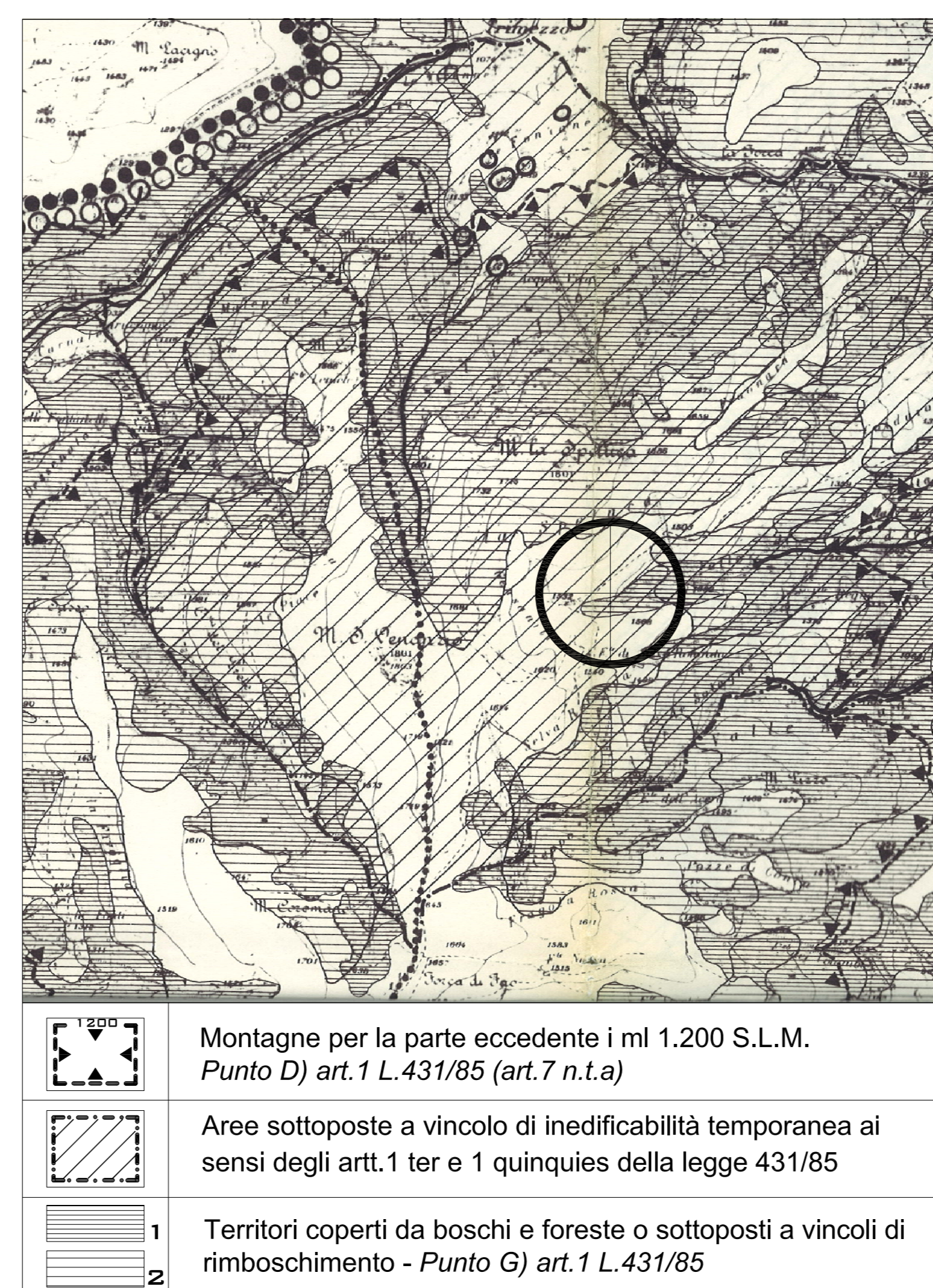
P.T.P.R. Tav. A5 - F337 - Scala 1:10.000



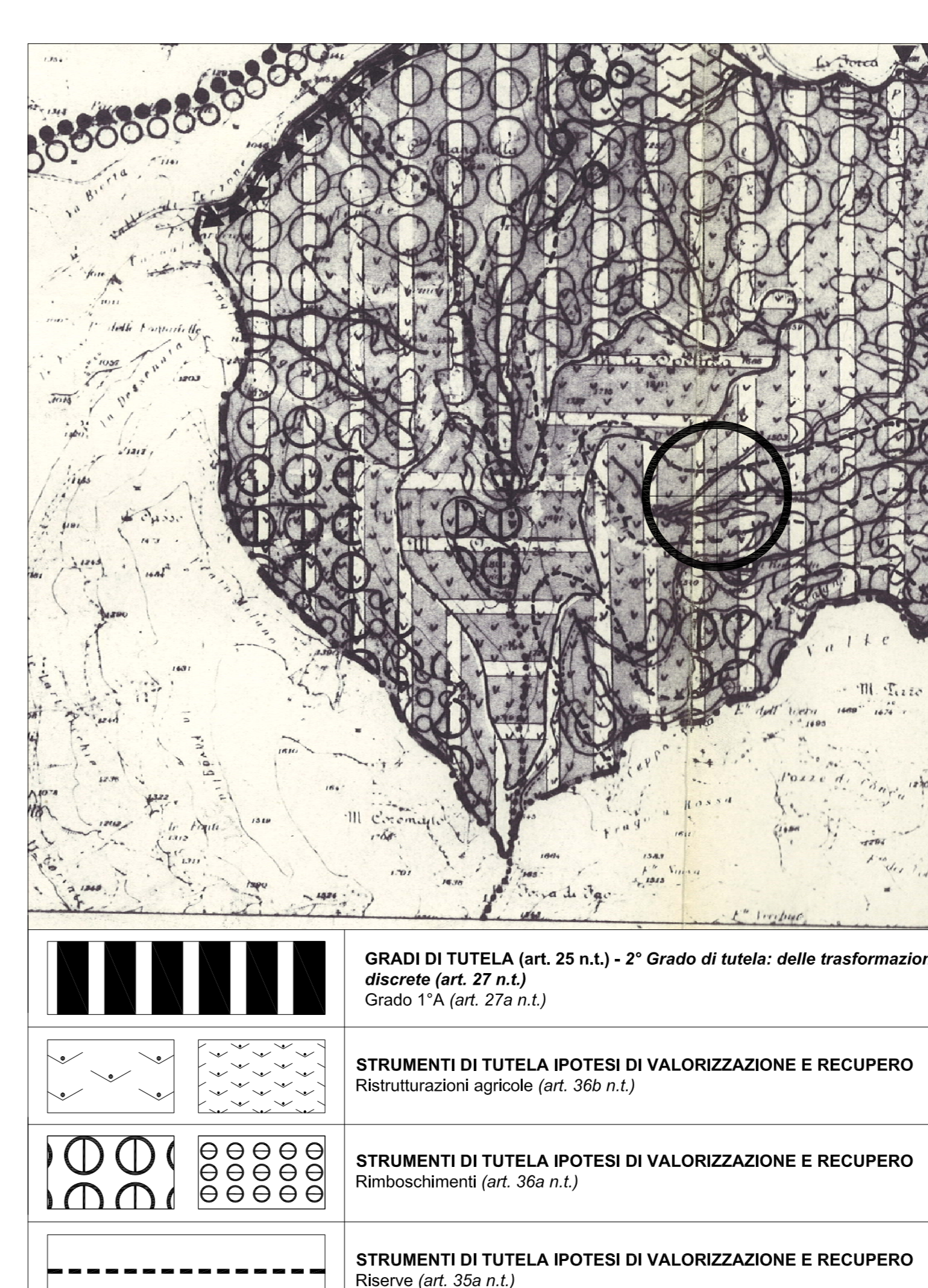
P.T.P.R. Tav. B5 - F337 - Scala 1:10.000



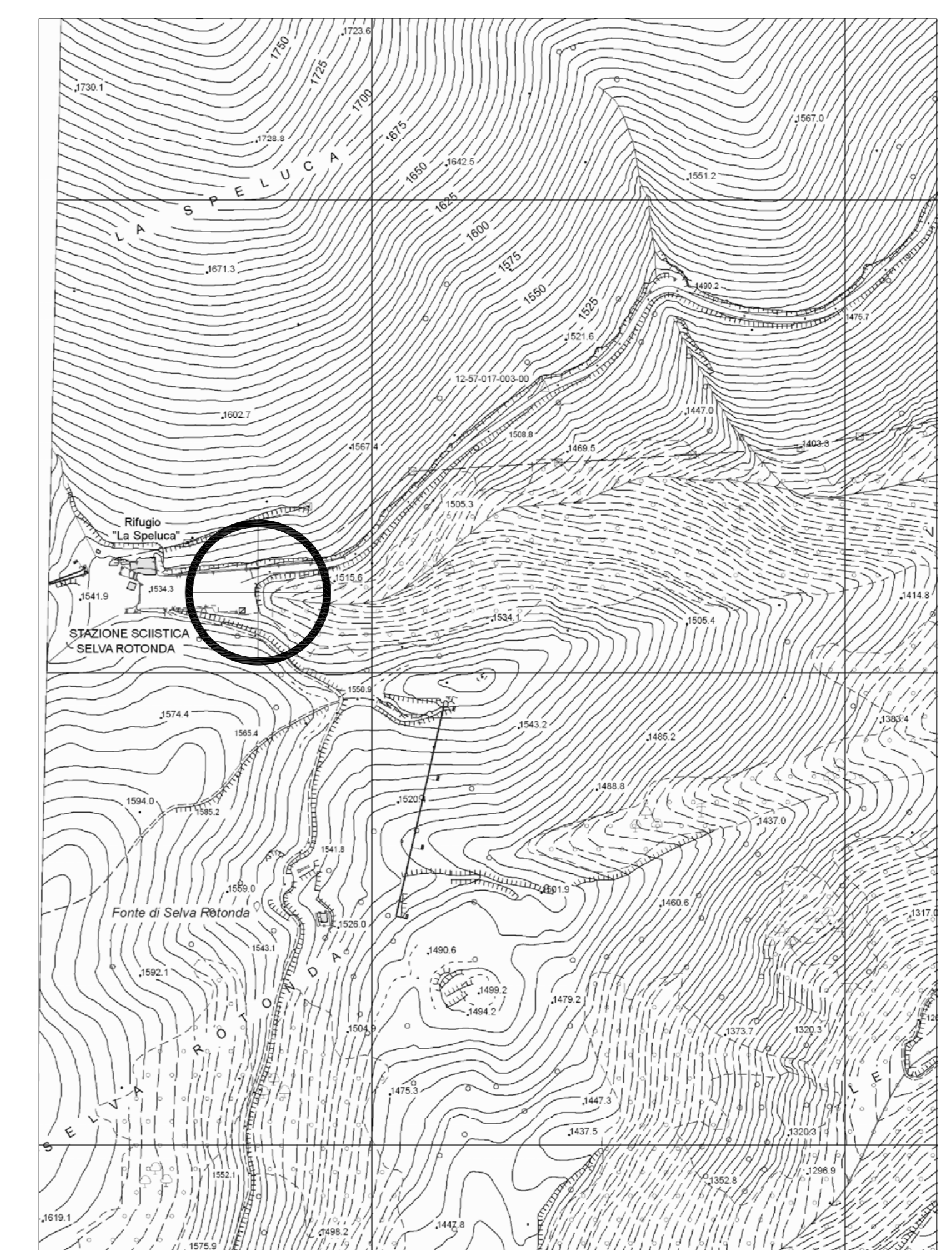
PLANIMETRIA CATASTALE - Scala 1:2.000



P.T.P. n°5 - E1 - Scala 1:25.000



P.T.P. n°5 - E3/2 - Scala 1:25.000



CARTA TECNICA REGIONALE - Scala 1:5.000